

Trophoblast-Uterine Interactions in the Establishment of Pregnancy

金野俊洋 博士
(Dr. Konno, Toshihiro)

Institute of Maternal-Fetal Biology,
Division of Cancer and Developmental Biology,
University of Kansas Medical Center

日時: 2006年2月28日(火) 16:00 ~

場所: 応用動物科学系大学院講義室

第2研究棟6階(611)

金野俊洋博士は機能形態学分野の出身で、2000年に本学の博士号を取得後、農業生物資源研究所を経て、現在はカンサス大学で研究を行なっております。今回のセミナーでは現在の研究対象である生殖機能に関する話題についてご報告を頂きますので、興味のある方はぜひご参加下さい。

世話人: 機能形態学分野 山口高弘

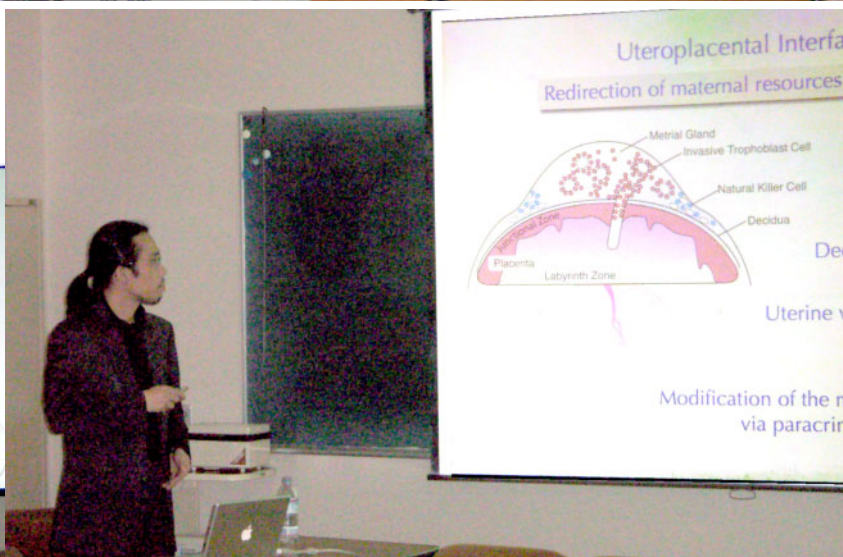


Trophoblast-Uterine Interactions in the Establishment of Pregnancy

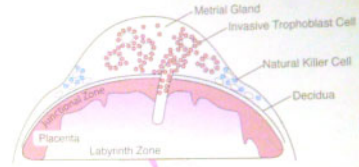
Toshihiro Konno

Institute of Maternal-Fetal Biology
Division of Cancer & Developmental Biology
Department of Pathology & Laboratory Medicine
University of Kansas Medical Center

The Institute of Maternal-Fetal Biology



Uteroplacental Redirection of maternal resources



Modification of the m...
via paracrin...



Acknowledgements

Michael J. Soares

Source Lab:
Rupam An,
Juan Bustamante,
S.M. Khorshid Alam,
Lea Kempel,
Jennifer Ho-Chen,
Lindsay Carham,
Amanda Crowley,
Brent Carham,
Stacy McClure



Collaborators:
Juan Arroyo,
Ganli Dai,
Yu Lu,
Danhua Wang,
Judy Thurman,
Alan Gobert

Supported by the NIH and the Hill Family Foundation

The Institute of Maternal-Fetal Biology



Acknowledgements

Michael J. Soares

Source Lab:
Rupam An,
Juan Bustamante,
S.M. Khorshid Alam,
Lea Kempel,
Jennifer Ho-Chen,
Lindsay Carham,
Amanda Crowley,
Brent Carham,
Stacy McClure



Collaborators:
Juan Arroyo,
Ganli Dai,
Yu Lu,
Danhua Wang,
Judy Thurman,
Alan Gobert

Supported by the NIH and the Hill Family Foundation

The Institute of Maternal-Fetal Biology

